

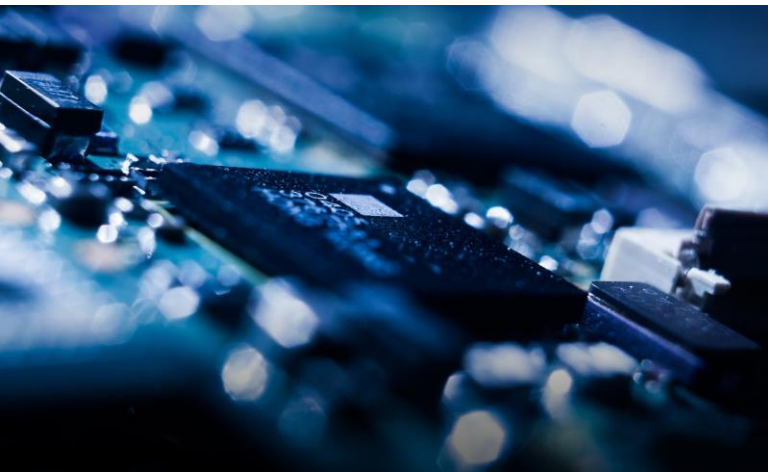
:hager

COVIVA SMARTBOX

00 Introduction

Expertise Through Time

■ Reason why



“If it does not convince buyers and users, even the most sustainable technology is useless. If you want to be successful technologically, you have to listen to those who will use the innovations.”

In: Hager Report 2015

Hager coviva is a gateway allowing to control remotely many house functionalities using KNX compatible products.

Positionning of coviva in Hager RF range



Micromodules

For ligths and shutter control



Heating Control

For hot water or electrical heating

:hager



Security

With Hager sepio alarm system control



Connected Objects

When compatible, like Netatmo weather station

01

coviva
USPs | Benefits

Making a house a home

■ With the coviva App

PRODUCTS

Users can modify the status of any single connected product in the house.
Ex: "Turn on the light or the electrical heating in this room".

COVIGRAMS

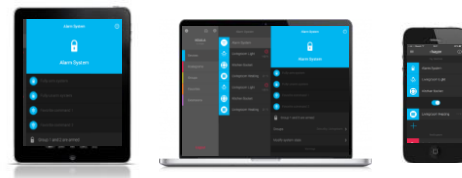
Users can set scenarios according the status of selected products.
Ex: "If it rains, close the shutters in this room and turn on the light".

GROUPS

Users can modify the status of a group of connected product in the house.
Ex: "Turn off all the lights of the first floor".

FAVORITES

Users can sort the products they use the most.



USPs & Benefits

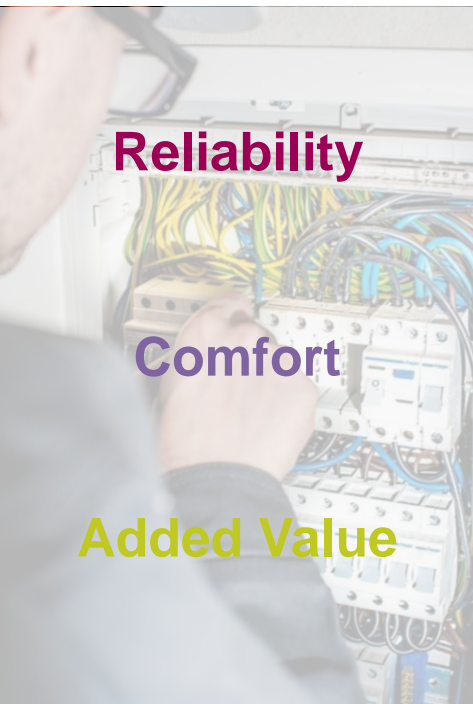
■ For... End Users



- + For end users, coviva is the way to optimize a house, as they can control any connected product through a dedicated and secured app, no matter how far away they are. As the solution does not use any cloud, user data remain confidential and secured.
- + End users can set several control levels for each person in the house, including children. In case of problems, it is easy for the installers to take control of the device and repair it. In other words, the smart house is flexible and end users will have peace of mind by controlling it fully.
- + A house responding exactly to the end user needs means reducing the energy bill. coviva is an affordable solution to energy costs issues. By setting scenarios according to weather conditions or even the time they spend in the house, end users can easily adapt their energy consumption.

USPs & Benefits

■ For... Installers



Reliability

Comfort

Added Value

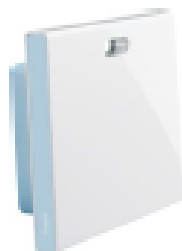
- + Hager also created coviva according to installers' needs: a reliable solution, allowing distance maintenance of equipment thanks to MyHager.
- + A quick installation in only 4 steps: ***connection to the controller, association of the products, customization and customer handover.***
No specific skills are needed. coviva is easy to install and do not require structural works.
- + Installers can develop their business with a solution adapted to the new customers expectations. In addition, they can save time as they can solve the problems of several customers simultaneously thanks to the coviva app.

02

Presentation of the Project | Market & Range Information | Price Indications

A Customized Range

■ coviva controller for...



Coviva controller
TKP100A



WiFi gateway
USB key TKP100A



LAN / WiFi Instal.
Adapter for TKP100A



- + Renovation
- + Retrofitting
- + Newly built homes



Environment

■ Experiencing Smart House

When users **are** in the house

- ✚ They can live better in their house.
- ✚ The house can be easily adapted to their needs.
- ✚ Scenarios can be set and changed at any time according to these needs (Ex: Adapting the temperature according to the situation, like watching TV, etc.)



When users **are not** in the house

- ✚ The house automatically regulates itself to save energy.
- ✚ Users know exactly what is happening in their house thanks to push notifications.
- ✚ They can anticipate and change the scenarios whenever they want.

03 User Guide | Technical Information

Technical Information

Power Supply	Sector / AC Input Voltage Range 230V 50Hz DC Output 5V – 3A Only use the TKC110 provided Power Supply
Power consumption	Normal : < 3W
Isolation Class	2
Radio emission	868-870 MHz / 433-434 MHz 0,1-10% transmitter duty cycle Receiver category 2
Radio range	300 meters outdoor
Protection	IP30 / IK04
Operating Temp.	0°C +40°C
Storage temperature	-25°C +70°C

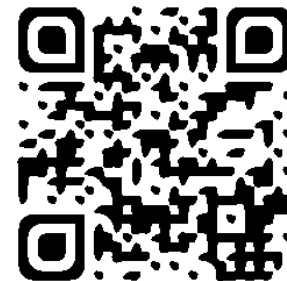
Relative humidity	93% HR 40°C
Network connectivity	Ethernet LAN WiFi 802,11 b/g/n (using optional TKH180)* Make sure to use the right shielded Ethernet cable, class : cat 5 FTP for proper system performance.
Extensions	2x USB ports 5V DC 250 mA max/port
Dimensions	178,5 x 156 x 48,4 mm Dimension without the removable back- cover
Material	PC/ASA – PC – Elastomer

Warning : TKP100 Extensions are designed to receive Hager qualified extensions exclusively. Don't use them to connect or charge other type of equipment

User Guide

■ Above all: Become a coviva installer

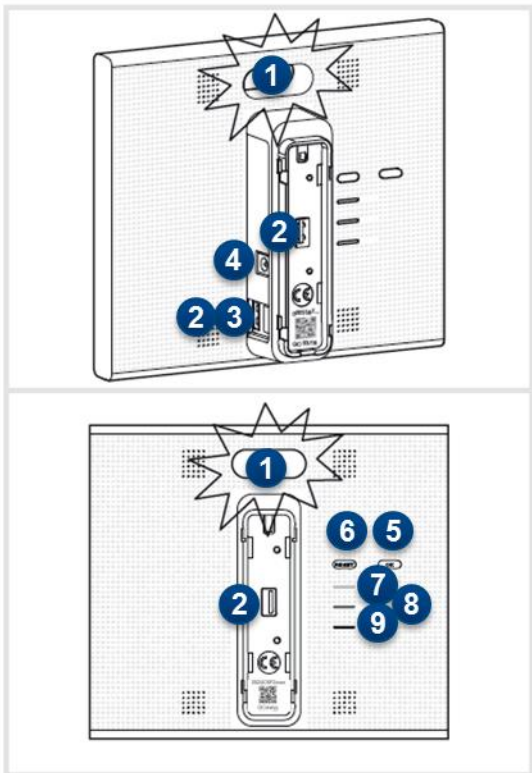
- **1.** Register on MyHager : Scan this QR code (or register on Hager website) and fill in the form



- 2.** Download the App and install it on your smartphone (or use the WebApp for PC)

- 3.** Login as coviva installer

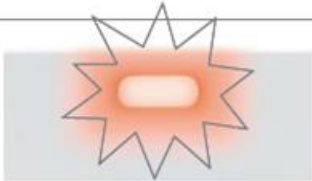
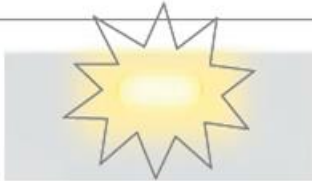
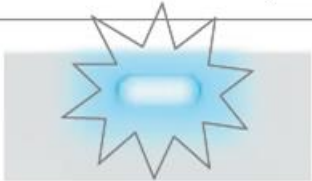
User Guide - Features



- 1 Main RGB Signaling:** Used to display notifications regarding your installation
- 2 USB Extension slots (x2):** Allows to install optional extensions such as WLAN/WiFi dongle TKH180
- 3 LAN connector RJ45:** Ethernet connector to connect the TKP100 controller to your local home network (LAN)
- 4 Power Supply connect:** 5V DC input from the TKC110 AC/DC power supply
- 5 OK Button:** The OK button allows you to acquit the current notifications and turns off the on-board RGB signaling for active notification.
- 6 RESET Button:** The reset functions are described page 22
- 7 ONLINE Indicator:** Indicates that the TKP100 controller is correctly connected to Internet
- 8 WLAN indicator:** Indicates, when a WLAN/WiFi optional extension is installed on the TKP100, its connection status
- 9 POWER Indicator:** Indicates that the TKP100 controller is correctly powered ON

User Guide - Features

■ Other features

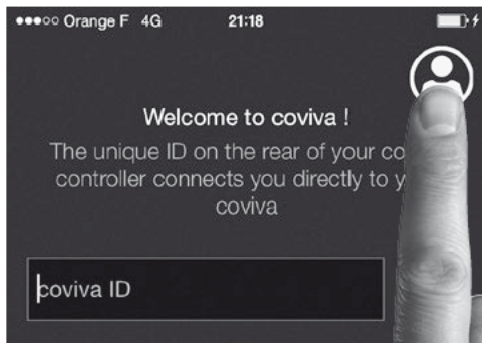
			
Flashing		Fixed	Flashing
Critical Alert such as Intrusion or Fire		Error Hardware or Software Error	Technical alert or installation warning such as low battery on an installed product
			Updating Software update in progress

For more cases in which colors are used, see the part dedicated to the reset procedure.

User Guide - Installation

■ 1. Login

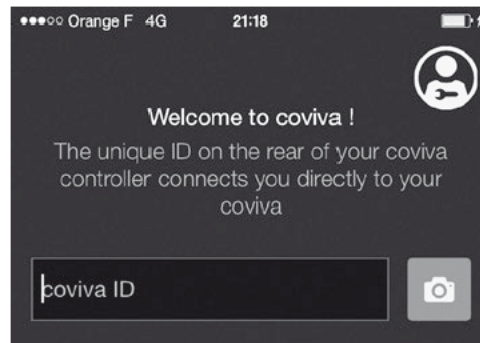
Click on the "installer login" icon



Enter your Hager portal login and password



Connect to your TKP100 controller



(detailed procedure on next page)

In case you need to continue an already started installation...

- Click on "Current Installations" instead of "New installation",
- Continue working normally and termine the installation !

User Guide - Installation

■ 2. Connecting

How to connect your coviva App to the TKP100 controller :

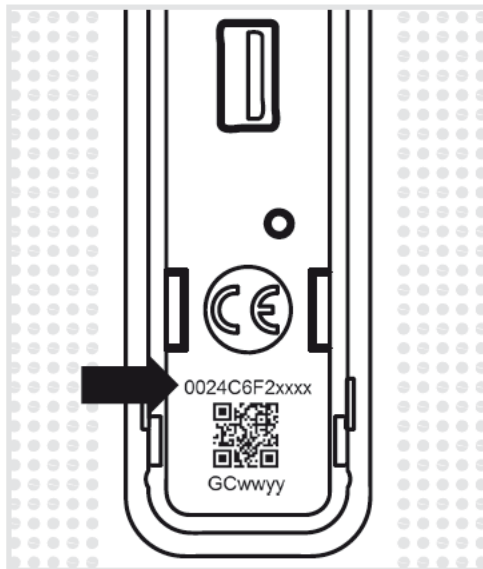
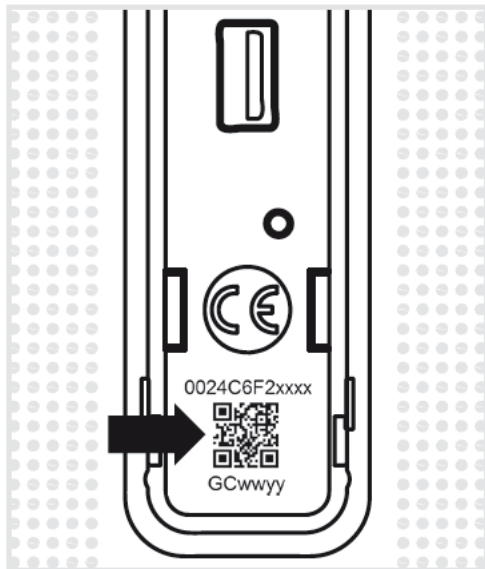
Remove the back cover and scan your TKP100 unique QR code

- This QR code is located at the rear side of the product (behind the back cover).

Alternatively, you may also link your App to the controller by typing the unique identification code, called the "coviva ID", that is located just above the QR code.

A great story begins

Your coviva app and TKP100 are now communicating sweetly.

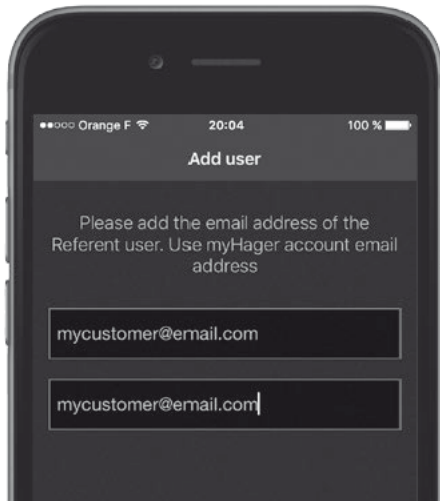


User Guide - Installation

■ 3. Declaring the referent user

Declare the Referent User..

You will be asked, before pairing any device, to enter you customer's email. The declared email will receive the role of "Referent User".



Tip : In case you mistyped or entered a wrong (or invalid) email, it is possible to step back to this declaration by performing a "User's reset".

..and install the latest updates !

If an update of the TKP100's software is available, it is highly recommended that you accept it and let it complete fully before continuing the installation. The update is complete when the controller completely stops blinking.



User Guide - Installation

■ 4. Associating quicklink products

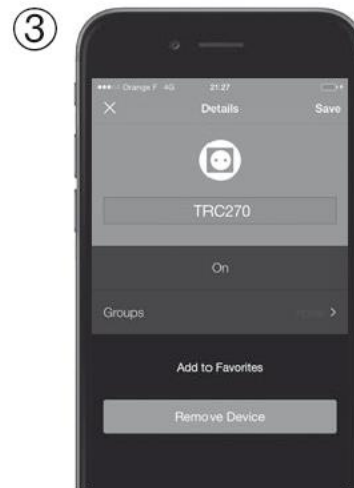
You can easily associate a number of quicklink products to your TKP100 as follows :



Press the blue "+" Button in the coviva App main page to add a new Device to your installation and select "**Other device**".



When asked by the coviva App, identify the device to add by pressing shortly the CFG button (for input **quicklink** devices) or the FCT button (for outputs **quicklink** devices)

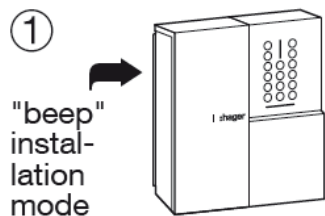


Your Product is now paired and can be used in your installation !

User Guide - Installation

■ 5. Associating a compatible Hager Alarm System

You can easily associate compatible Hager Alarms Systems to the TKP100 as follows :



The control panel must be in installation mode. If it is not, enter :

master code # 2 # #
(factory: 0000)

Then

installer code # 3 # #
(factory: 1111)



Press the blue "+" Button in the coviva App main page to add a new Device, and select **"Alarm System"**.



After a few seconds, your Alarm Control Panel serial number (last 6 digits) shall appear in the list. Confirm the right Control Panel serial by clicking **"OK"**.



Your Alarm System is now paired and ready for use with coviva ! You will always be asked to type the Alarm installer code to access the Alarm System visualisation and functions from the App.

User Guide - Installation







■ 6. Customizing

It is now time to make the system yours !

- The coviva App provides numerous possibilities to easily adapt the system to your customer's need. Here is a quick overview of what you can achieve with it :

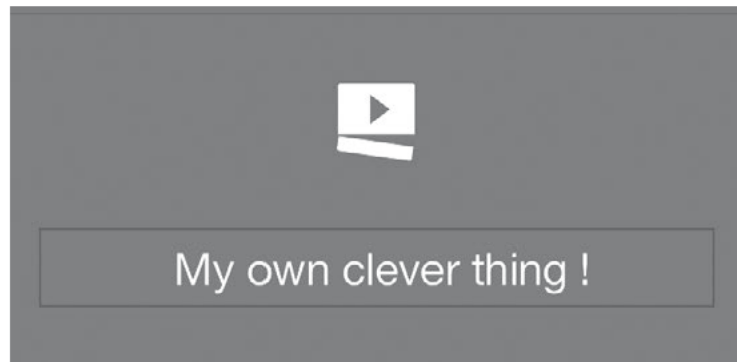
Friendly Groups

The TKP100 paired devices appearing in the coviva App can be freely grouped together for easy navigation.

groups		
	1st floor Shutters	
	2nd floor Shutters	
	Living Room lights	

Let covigrams work for you !

This flexible and friendly logic engine manage repetitive or conditionnal actions such as scenes and scenarios, create custom actions, notifications, easily :

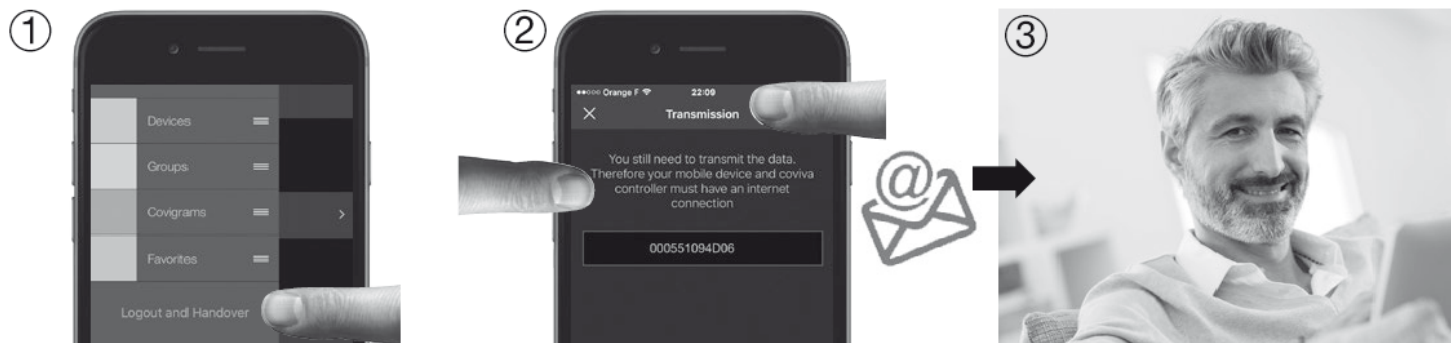


User Guide - Installation

■ 7. Handover procedure

Time to deliver your work to your lucky customer !

The **Handover** procedure allows you to perform an optimal transfer of control of the system from you (as installer) to your customer, without having to duplicate, share or disclose logins or access codes, to maintain a maximum level of security and confidentiality of the installation. N.B. This step is **mandatory** !



When the installation is completed, at time of disconnecting, the App will ask you to validate the Handover, which will launch the Handover process !

An email is sent to your customer defined as Referent User to activate his access to the system and transfer the rights to control it.

The Referent User activates his account.
System is ready to be used by him !

Note : To perform the Handover, both the TKP100 and the mobile device running the App must be connected to internet.

User Guide – How to reset coviva

Network reset

In which case?

in case of WiFi access code loss in use with TKH180 WiFi extension

What it does

Re-initialize the network settings. It will re-open a local access to the controller without modifying any other setting, installation profile, links, or user profile.

How?

Press the button for more than 5 seconds. When the controller flashes in blue, release it shortly then press it again.

Confirmation signal



User reset

In which case?

- To define a different Referent User, or correct a wrong email address
- For an installer-level user to take system control.

What it does

Returns the controller to pre-Handover state without modifying installation profile, links, and other settings.

How?

Press the button for more than 20 seconds. The controller flashes in blue. When it starts flashing in yellow, release RESET button shortly, then press it again to confirm.

Confirmation signal



Factory reset

In which case?

Restart an installation from scratch.

What it does

Return the controller to its original factory state and **delete** all installation profile, links, and local user profiles defined previously, and rollback all installed controller software updates.

How?

Simultaneously press RESET and power on the TKP100. Maintain button pressed while the unit starts flashing slowly (approximately 5 seconds). When the unit flashes faster in red, release the RESET button. Wait for a few minutes until the unit completely stops flashing in blue, which indicates the end of the sequence

Confirmation signal

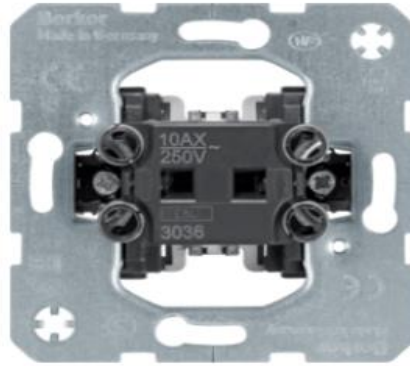


What's the easiest way to modernise?

Fit your home with higher-quality switches with customised designs



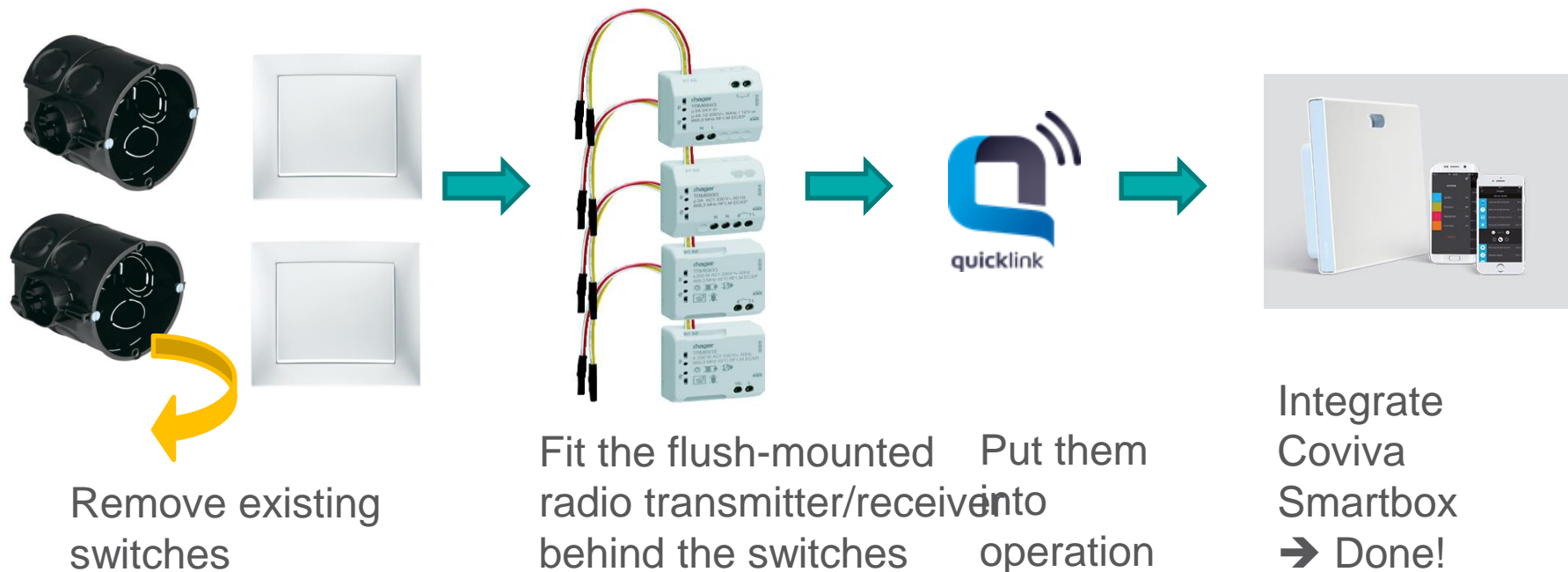
Remove rocker and frame
of the standard range



Fit frame and rocker of Berker K.5,
e.g. for robust and easy-to-clean
material in a high-quality kitchen

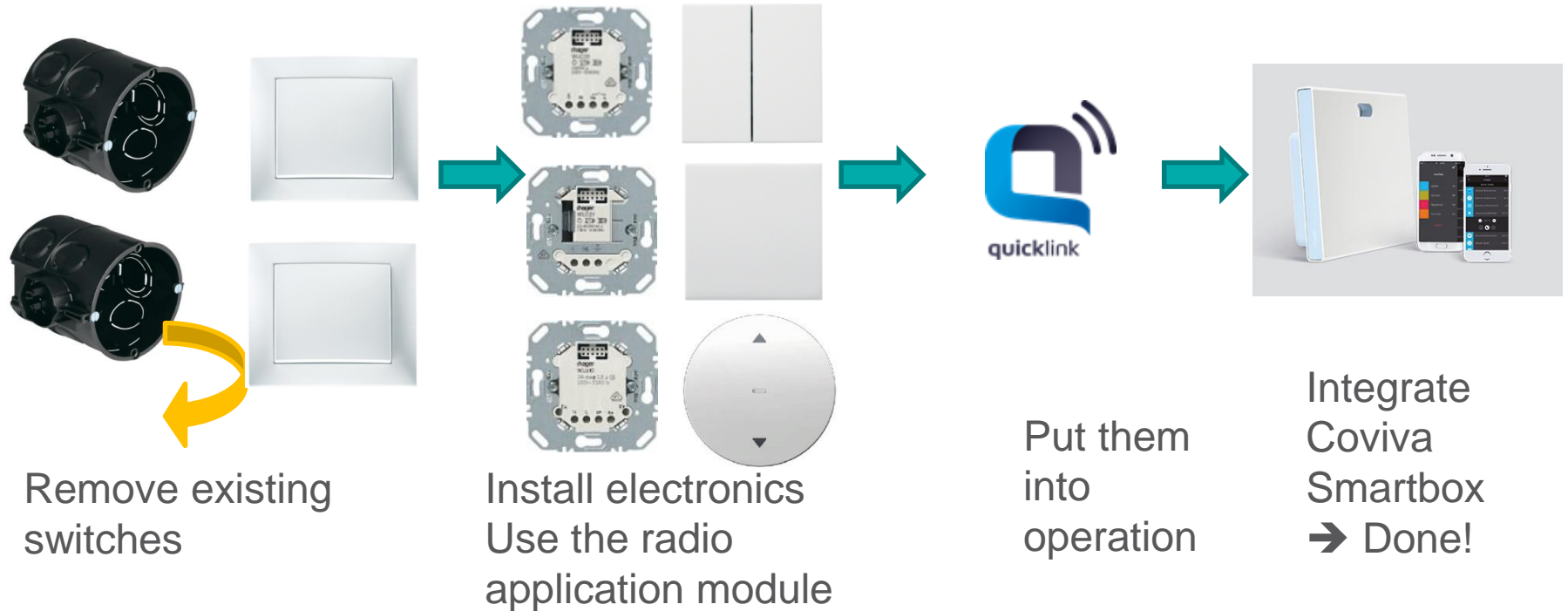
How can we modernise with added value?

Operate your conventional installation easily with a smartphone



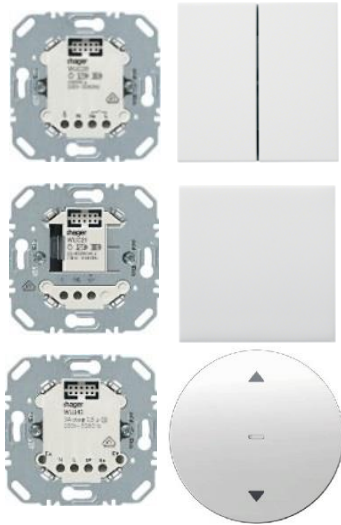
What is modernisation with added value and lots of comfort?

Visualise and benefit from greater ease of operation



What is high-end modernisation?

Upgrade existing KNX installations without the added hassle using quicklink



KNX



Install electronics
Use the radio
application module

Overview of KNX offering

Our solutions



COVIVA SMARTBOX



- Coviva with smartphone = quicklink transmitter with status display
- Familiar startup of quicklink by pressing a button
- Controlled locally (from QL product to QL product) even without Coviva Smartbox **and** the data is stored locally (not in the cloud)
- Customers can generate sequences themselves using the app (if/then instructions)
- Remote access is not achieved through a portal (like Domovea) but through an integrated DynDNS service
- Updates are provided to the customer by online notification (like with easy)

COVIVA SMARTBOX



COVIVA SMARTBOX

Summary

- **Hager is the only company offering a consistent and sustainable solution**
- **Coviva is safe**
- **Coviva supports craftsmanship**
- **A new impetus for quicklink and switch ranges**
- **Lead-in to the topic of modernisation**

For any customer, any project and the right solution at the right time!

**Thank you
for your attention!**

